

WIRIS SECURITY & GPORT WITH PIXY WS QUICK START GUIDE

Compatible with: Workswell WIRIS Series cameras & Gremsy Pixy WS & gPort



GENERAL INFORMATION

Wiris Security with Gremsy Pixy WS gimbal, and Gremsy gPort can be used as Plug&Play solution with DJI Matrice platform – DJI M200 V2 and DJI M300 RTK

Wiris Pro can be **fully controlled via gPort and DJI app** as with Wiris OS function menu.

You need to have: Wiris Security camera – upgrade on fw version 1.5.0 or higher, Gremsy gPort – for connection between drone and gimbal, gimbal Gremsy PIXY WS

Connection scheme of Gremsy Pixy WS, Gremsy gPort and DJI drone

DJI M200 V2 / M300 series



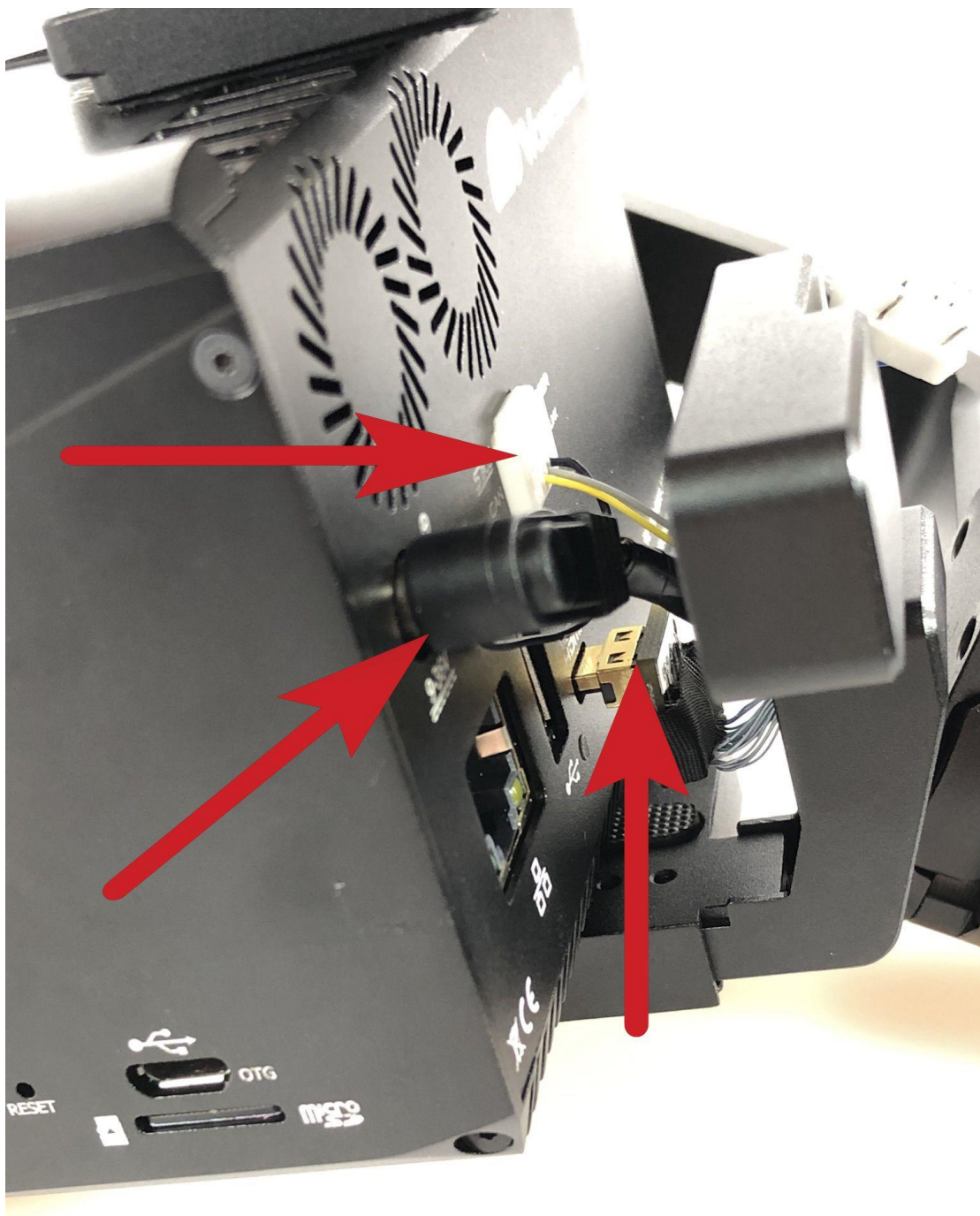
Gremsy Pixy gimbal

WIRIS SECURITY AND GPORT WITH PIXY WS - STEP BY STEP MANUAL FOR CONNECTION

1. We will connect standard Wiris Security camera with activated CCP protokol into a Gremsy Pixy WS gimbal. We do not need any other cables, everything is inside of a gimbal.



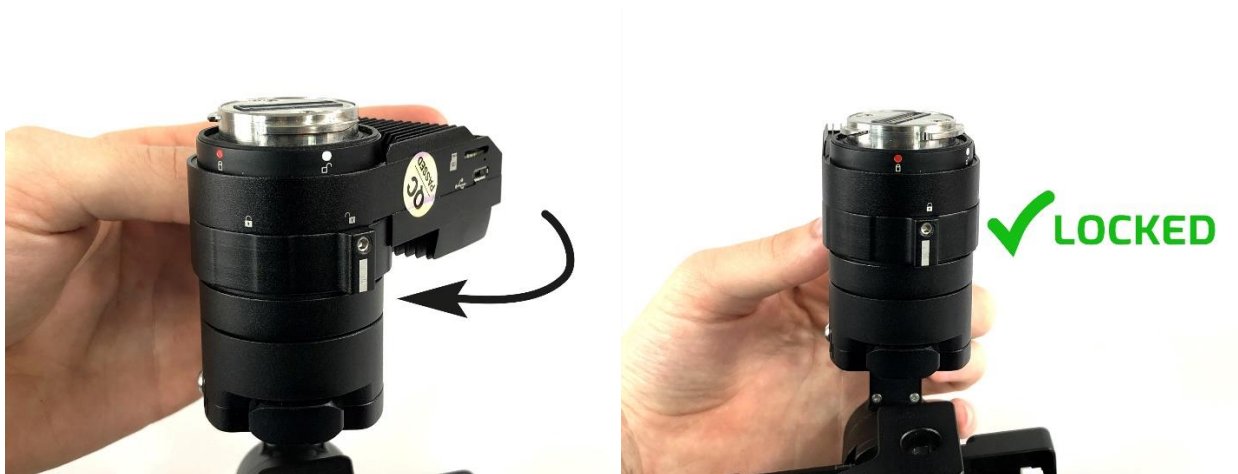
2. Insert 10 pin white CAN connector, then HDMI gold connector and then power source cable (black connector), then tighten the camera to the gimbal with a screw on upper side or lower side of a gimbal – connection of camera into a gimbal is done



3. Unlock the mount system - align the white dot on gimbal with white line on a gPort



4. Secure the mount system between the gimbal and gPort



5. Align the white dot on a gPort with a red dot on a drone port



6. Secure this mount system



WIRIS SECURITY SYSTEM APPERANCE IN DJI APP

7. Camera settings is done with DJI interface buttons. Advanced menu and setting is under the “payload settings” icon. You can set up camera features like in the standard WIRIS OS.



8. You can control the Wiris Security now. For example zooming with thermal and RGB camera

